

Universal Data Models

For Embarcadero® ER/Studio®

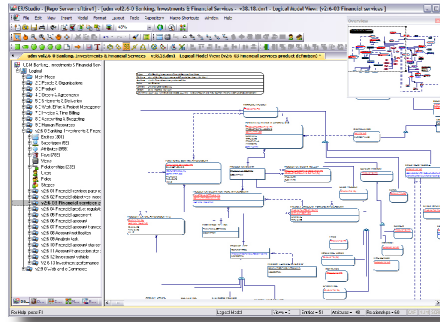


Universal Data Models, an industry-standard set of data model templates developed by renowned author and modeling expert Len Silverston, are now available for Embarcadero® ER/Studio®. These time-proven templates have been continuously improved during the last 15 years and implemented by hundreds of companies, providing them with a complete set of data models that ensure quality, reduce development time, and facilitate standardization of existing data models and definitions.

- Achieve high-quality models
- Reduce development time
- Improve consistency and standardization

ACHIEVE HIGH-QUALITY MODELS

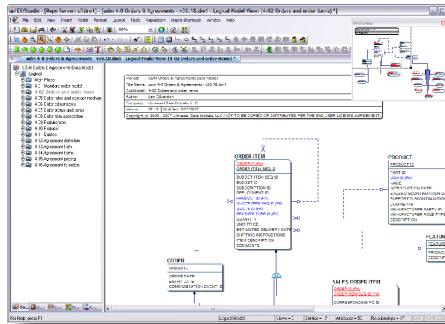
The Universal Data Models (UDMs) were developed by a team of experienced data modelers, led by Len Silverston. The templates have been refined based on hundreds of implementations and are laid out for easy navigation, including full attributes and detailed definitions for every attribute. They make sophisticated data models more accessible to small and medium-sized businesses that previously had to forego them due to budget or IT constraints. The models are available for nine different subject areas as a complete and integrated corporate model, and seven industry-specific add-ons.



Model your entire organization, including the specialized needs found in your unique industry.

REDUCE DEVELOPMENT TIME

The UDMs are available for ER/Studio, reducing development time and ensuring quality. The templates arm users with a powerful set of data models and data warehouse designs that jump-start database development projects. They include proven models for common business functions such as ordering and managing products, handling shipments, invoicing, accounting and budgeting, managing human resources, contact management, and project management. New models can be laid out and categorized into subject data areas with ER/Studio's easy-to-use format, reducing data model development and maintenance time by an average of 60 percent, as well as improve the quality of existing data models. Users can save even more time with the industry-specific extensions for Healthcare; Telecommunications; Manufacturing; Banking, Investments, & Financial Services; Insurance; Professional Services; and Travel.



Subject Area Models provide a focused model of common organizational activities.

IMPROVE CONSISTENCY AND STANDARDIZATION

The Universal Data Models enable users to be consistent with other organizations and improve quality assurance by referencing hundreds of integrated, "best practice" models. UDM customers can refer to a standard, proven source for models that are easily able to handle conflicting opinions regarding data modeling. All of the models contain a full set of entities, relationships, attributes, and detailed definitions. The models are also a great resource for enterprise data modeling, master data management, data warehouse, data governance, data quality, metadata, data dictionary standardization, and any effort where data models can help.

Design & Modeling Products

ER/Studio XE

Complete modeling and architecture solution combining data, process and UML modeling into a powerful multi-level design environment

ER/Studio Data Architect

Data modeling tool for analyzing, designing, creating, and maintaining database applications

ER/Studio® Portal

Centralize self-service web portal for searching and reporting metadata contained in the ER/Studio Repository

ER/Studio® Repository

Server-side model management system for collaborative team modeling

ER/Studio®

Business Architect

Business modeling tool for connecting process and data

ER/Studio®

Software Architect

Object-oriented modeling tool to visually analyze, design and implement complex application and data structures

ER/Studio® MetaWizard

Integrate metadata across modeling tools, business intelligence, ETL platforms and industry-standard exchange formats (XMI, XML and XSD)

ER/Studio® Viewer

View, navigate and print ER/Studio models in a view-only environment

ER/Studio®

Universal Data Models

Industry data model templates for ER/Studio that reduce development time and facilitate standardization

Embarcadero®

Schema Examiner

Automate error-checking and corrections for database schema to quickly and easily improve data quality and system performance

Features	Description
Subject Area Corporate Models	
The subject area data models provide a framework and re-usable constructs for common corporate subject areas and are a jumpstart for any company working on specific modeling efforts or striving to define a common data model. Each entity includes primary keys, foreign keys (when applicable), and full descriptions for both entities and attributes.	
People & Organizations	Includes entities such as PARTY, PARTY ROLE, ORGANIZATION, PERSON, and POSTAL ADDRESS
Product	Includes entities such as PRODUCT, SERVICE, GOOD, FEATURE TYPE, and INVENTORY ITEM
Orders & Agreements	Includes entities such as ORDER, AGREEMENT, REQUIREMENT, QUOTE, and RFP
Shipments & Deliveries	Includes entities such as SHIPMENT, RECEIPT, ISSUANCE, SHIPPING DOCUMENT, and SHIPMENT ROUTE SEGMENT
Work Effort & Project Management	Includes entities such as WORK REQUIREMENT, WORK EFFORT, TIME ENTRY, and RATE TYPE
Invoice & Time Billing	Includes entities such as INVOICE, BILLING ACCOUNT, PAYMENT, and FINANCIAL ACCOUNT
Accounting & Budgeting	Includes entities such as GENERAL LEDGER ACCOUNT, ACCOUNTING TRANSACTION, BUDGET, BUDGET SCENARIO, and PLANNING TRANSACTION
Human Resources	Includes entities such as EMPLOYEE, POSITION, RESPONSIBILITY TYPE, SKILL TYPE, SALARY, and BENEFIT
Web and e-Commerce	Includes entities such as USER PREFERENCE, WEB ADDRESS, OBJECT CONTENT FRAME, SERVER HIT, and WEB VISIT

Industry-Specific Models	
The industry area data models provide a framework and re-usable constructs for various industry areas and are a jumpstart for any company working on a modeling effort within a particular industry or striving to define a common data model. The models include all the subject area corporate models shown above that are integrated into the industry constructs. Each entity has primary keys, foreign keys (when applicable), and full descriptions for both entities and attributes.	
Repository for Banking, Investments, & Financial Services	Includes entities such as ACCOUNT, INVESTMENT VEHICLE, SECURITY, SAVINGS ACCOUNT, OBJECTIVE, RISK ANALYSIS, PERFORMANCE CHARACTERISTIC TYPE, YIELD TYPE, FINANCIAL POSITION, MORTGAGE, SCHEDULED PAYMENT DUE, FINANCIAL AGREEMENT, and ACCOUNT NOTIFICATION
Repository for Healthcare	Includes entities such as PATIENT, INSURED PARTY, INSURANCE PROVIDER, HOSPITAL, MEDICAL OFFICE, HEALTH CARE VISIT, HEALTH CARE EPISODE, CLAIM, and SETTLEMENT
Repository for Insurance	Includes entities such as INSURANCE AGENCY, PAYOR, INSURANCE PRODUCT, COVERAGE LEVEL, COVERAGE TYPE, ACTUARIAL ANALYSIS, RATE, APPLICATION, QUOTE, INSURANCE POLICY, PREMIUM SCHEDULE, and CLAIM
Repository for Manufacturing	Includes entities such as DISTRIBUTION CHANNEL, PART, RAW MATERIAL, PART SPECIFICATIONS, ENGINEERING CHANGES, MANUFACTURING BOM, MANUFACTURING ORDER, and PROCESS PLAN
Repository for Professional Services	Includes entities such as PROFESSIONAL RESOURCE REQUIREMENT, SKILL TYPE, RFI, RFQ, RFP, ENGAGEMENT, ENGAGEMENT RATE, PROFESSIONAL ASSIGNMENT, SERVICE ENTRY, and WORK EFFORT
Repository for Telecommunications	Includes entities such as TELECOMMUNICATIONS CARRIER, REGULATORY AGENCY, NETWORK COMPONENT, NETWORK ASSEMBLY, DEPLOYMENT, and SERVICE ORDER
Repository for Travel	Includes entities such as TRAVELER, TRAVEL PREFERENCES, TRAVEL RESERVATION, TICKET, SALE, SCHEDULED TRANSPORTATION, ACCOMMODATION CLASS, and TRAVEL EXPERIENCE

System Requirements

- ER/Studio 7.1 or higher
- 2 MB per Subject Area Model
- 10 MB per Industry Model or Integrated Corporate Model

Download a Free Trial at www.embarcadero.com

Corporate Headquarters | Embarcadero Technologies | 100 California Street, 12th Floor | San Francisco, CA 94111 | www.embarcadero.com | sales@embarcadero.com